

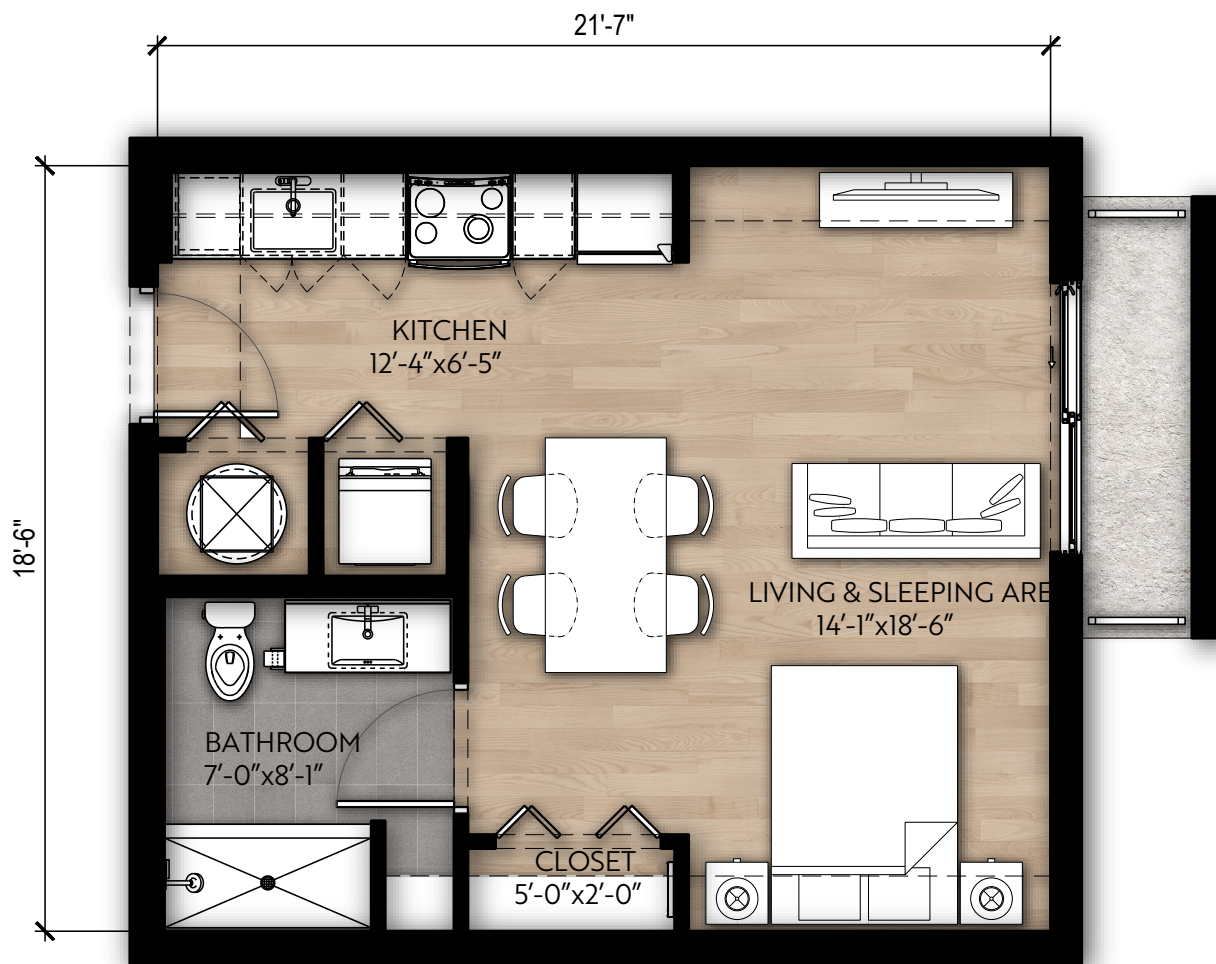
# SOMI PARC

## PALMETTO

Total Area: 404 SF

STUDIO\* / 1 BATH

\*Balcony available in select units only.



Call (786) 530-9153 or visit [SoMiParc.com](http://SoMiParc.com)



The developer is Residences at SoMi Parc, LLC ("Developer"), which has a license to use the name and trademarks of The Related Group and/or RUDG, LLC. by license. All renderings, photographs, and images, including floor plans, are intended to illustrate generally the lifestyle and ambiance intended for the completed community along with contemplated unit amenities and options, but are not intended as a guarantee of any specific community activities nor of the size or dimensions of completed unit sizes. For terms and conditions of leasing consult the Lease and the Community Policies and Rules available from the Manager once leasing begins. No reproduction for personal or commercial uses is permitted. © 2023 Developer, with all rights reserved.

# SOMI PARC

## SUNSET

STUDIO / 1 BATH

Total Area: 577 SF



Call (786) 530-9153 or visit [SoMiParc.com](http://SoMiParc.com)



The developer is Residences at SoMi Parc, LLC ("Developer"), which has a license to use the name and trademarks of The Related Group and or RUDG, LLC by license. All renderings, photographs, and images, including floor plans, are intended to illustrate generally the lifestyle and ambiance intended for the completed community along with contemplated unit amenities and options, but are not intended as a guarantee of any specific community activities nor of the size or dimensions of completed unit sizes. For terms and conditions of leasing consult the Lease and the Community Policies and Rules available from the Manager once leasing begins. No reproduction for personal or commercial uses is permitted. © 2023 Developer, with all rights reserved.



# SOMI PARC

## RIVIERA

1 BED / 1 BATH

Total Area: 626 SF



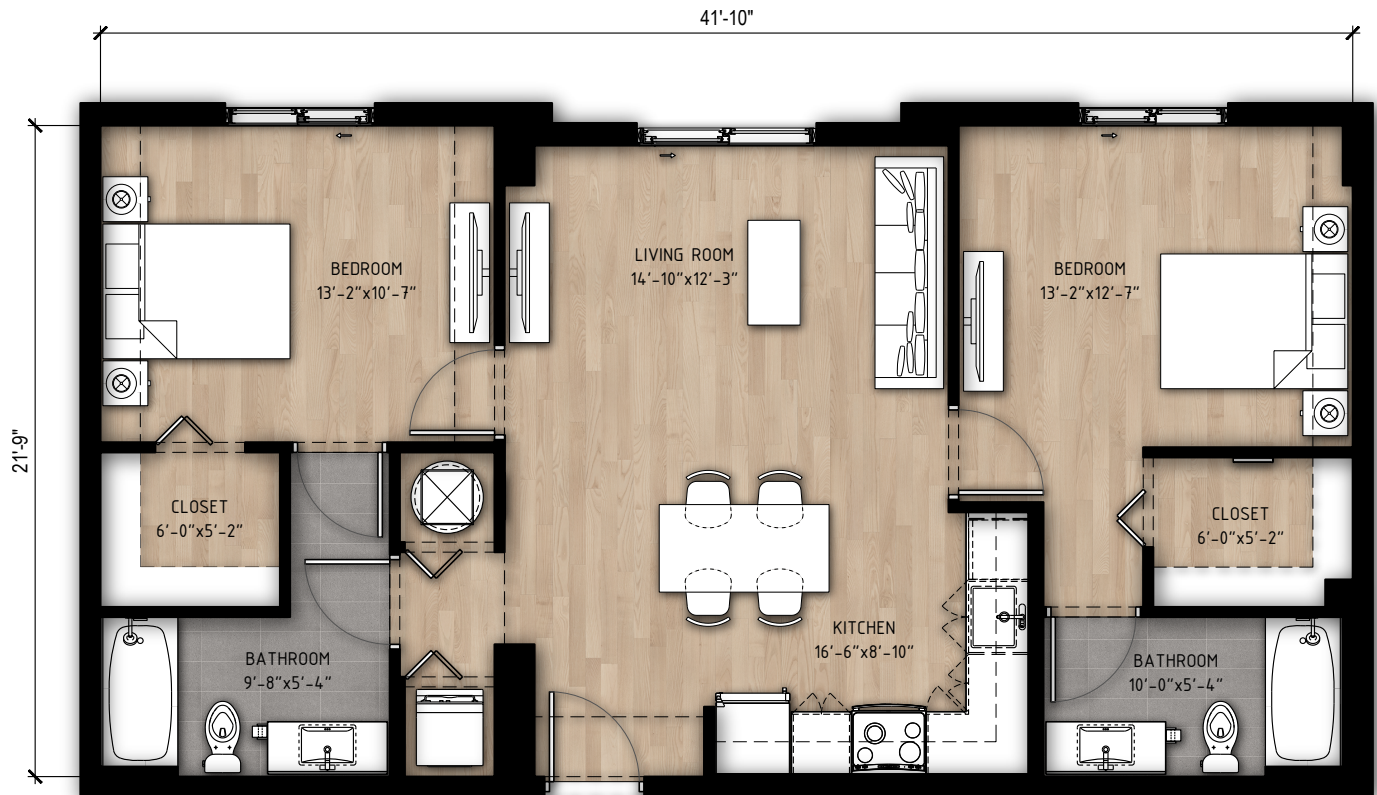
Call (786) 530-9153 or visit [SoMiParc.com](https://www.SoMiParc.com)

# SOMI PARC

## PINES

2 BED / 2 BATH

Total Area: 894 SF



Call (786) 530-9153 or visit [SoMiParc.com](https://www.SoMiParc.com)



The developer is Residences at SoMi Parc, LLC ("Developer"), which has a license to use the name and trademarks of The Related Group and or RUDG, LLC by license. All renderings, photographs, and images, including floor plans, are intended to illustrate generally the lifestyle and ambiance intended for the completed community along with contemplated unit amenities and options, but are not intended as a guarantee of any specific community activities nor of the size or dimensions of completed unit sizes. For terms and conditions of leasing consult the Lease and the Community Policies and Rules available from the Manager once leasing begins. No reproduction for personal or commercial uses is permitted. © 2023 Developer, with all rights reserved.

## PONCE

Total Area: 966 SF

2 BED / 2 BATH\*

\*Balcony available in select units only.

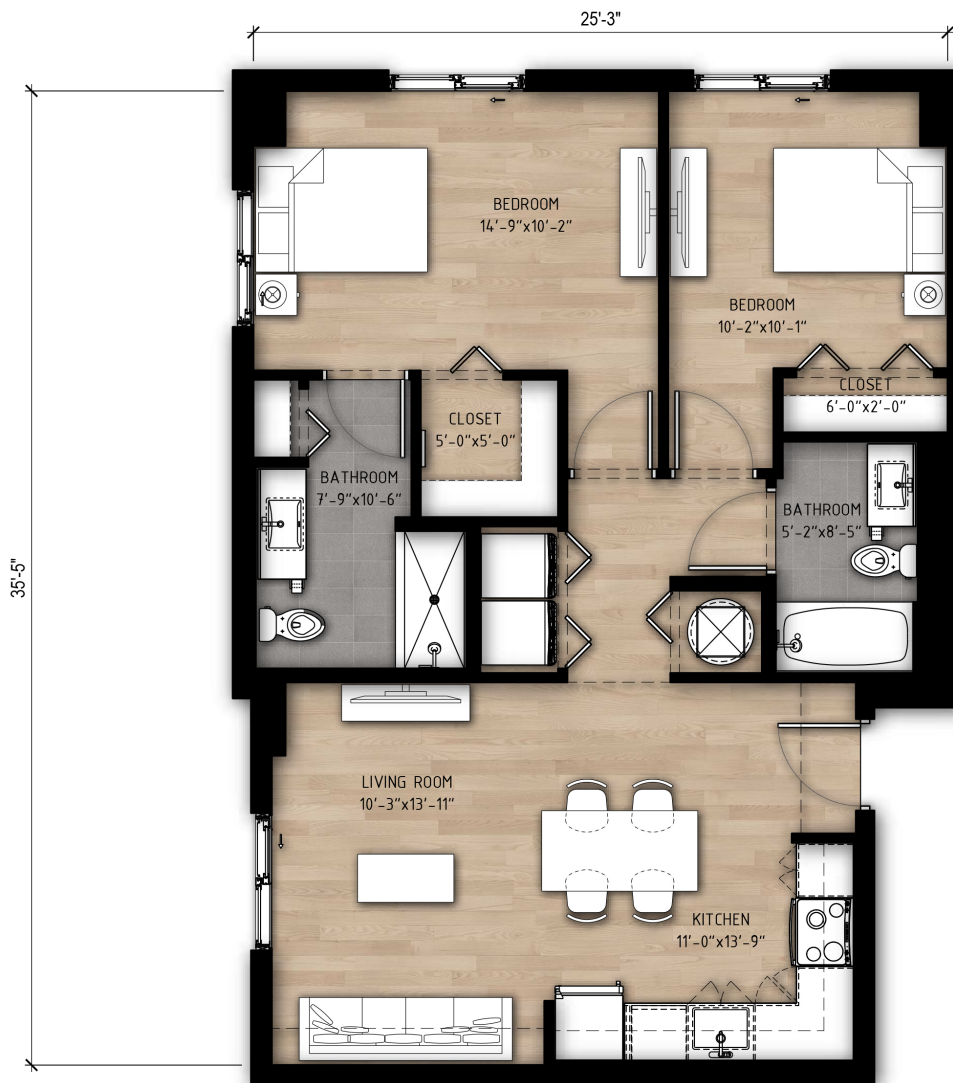


Call (786) 530-9153 or visit [SoMiParc.com](http://SoMiParc.com)

## PONCE 1.1

2 BED / 2 BATH

Total Area: 831 SF



Call (786) 530-9153 or visit [SoMiParc.com](http://SoMiParc.com)



# SOMI PARC

## PONCE 1.2

Total Area: 900 SF

2 BED / 2 BATH



Call (786) 530-9153 or visit [SoMiParc.com](https://www.SoMiParc.com)

# SOMI PARC

## PONCE 1.3

2 BED / 2 BATH

Total Area: 846 SF



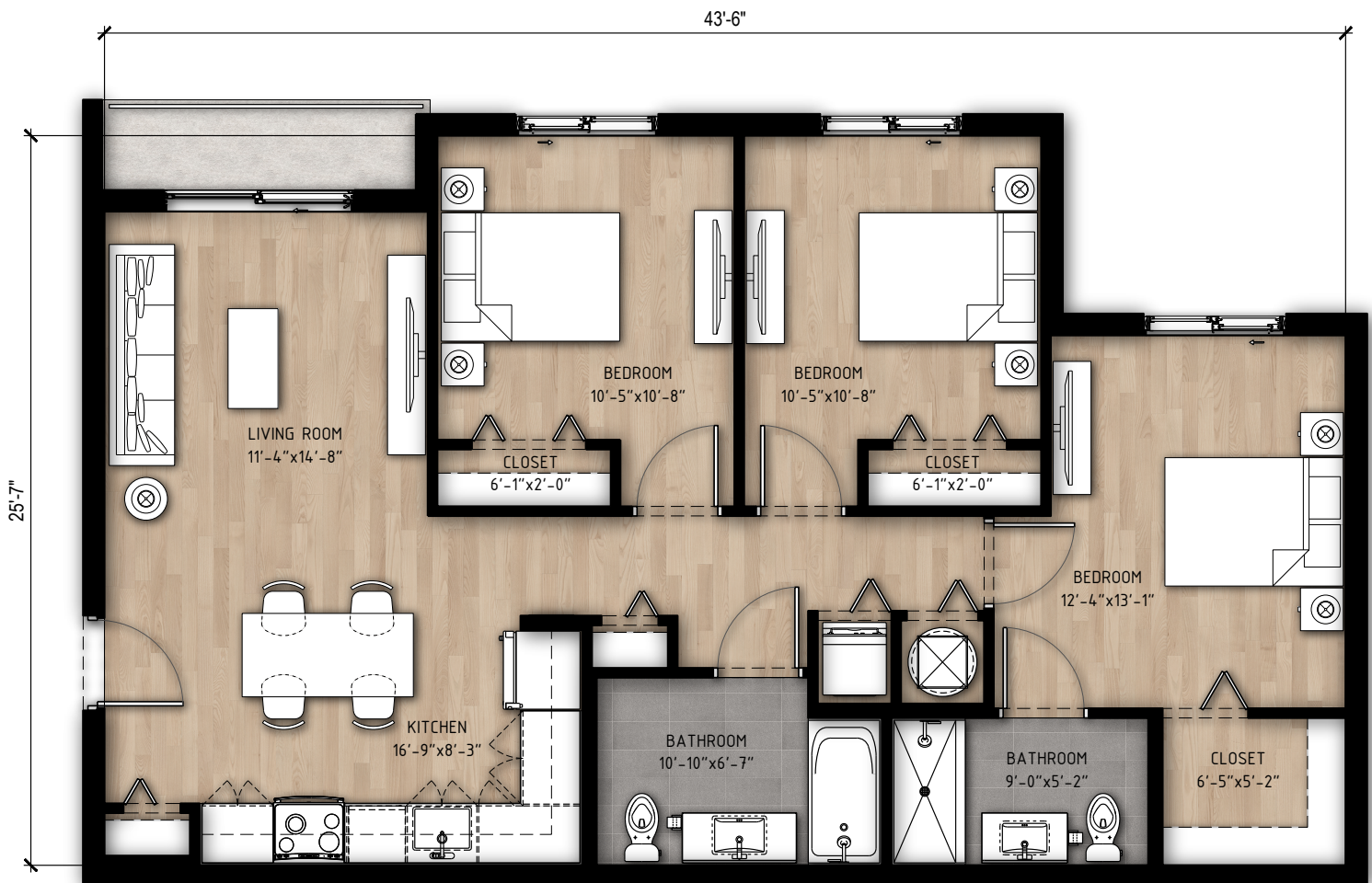
Call (786) 530-9153 or visit [SoMiParc.com](https://www.SoMiParc.com)

## VENETIAN

Total Area: 1088 SF

3 BED / 2 BATH\*

\*Balcony available in select units only.



Call (786) 530-9153 or visit [SoMiParc.com](https://www.SoMiParc.com)